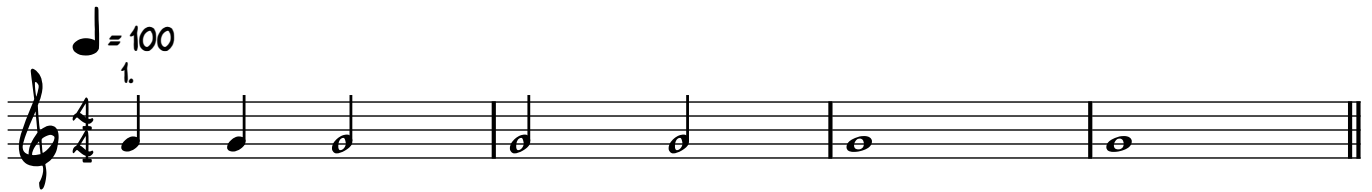



Ritmische & Melodische oefeningen



11.  = 80

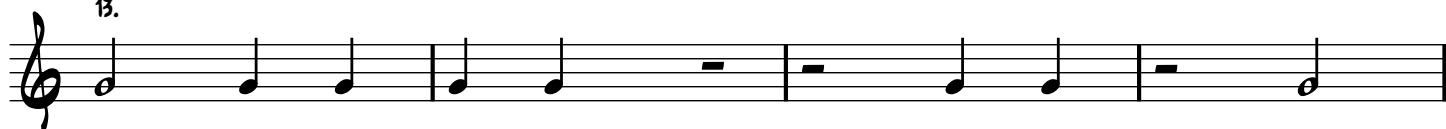
11.



12.



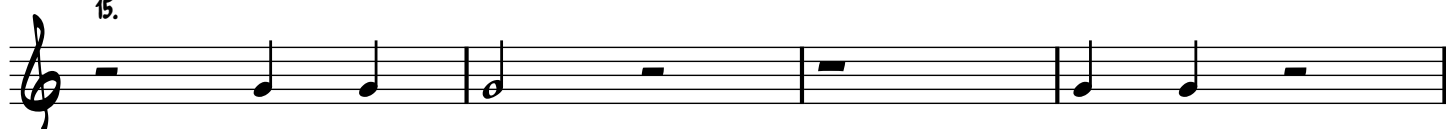
13.



14.



15.



Melodische oefeningen in do of C-groot

1.

do re mi fa sol la si do

C D E F G A B C

do si la sol fa mi re do

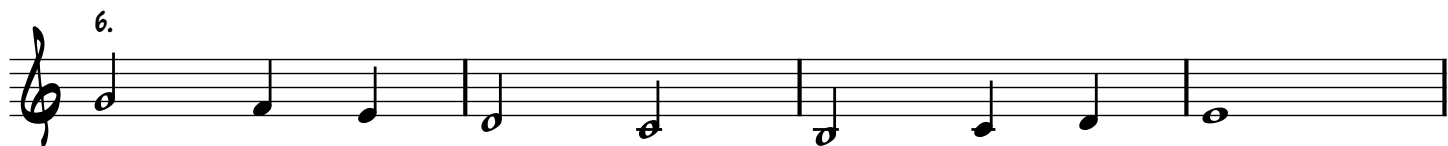
C B A G F E D C

2.

3.

4.

5.



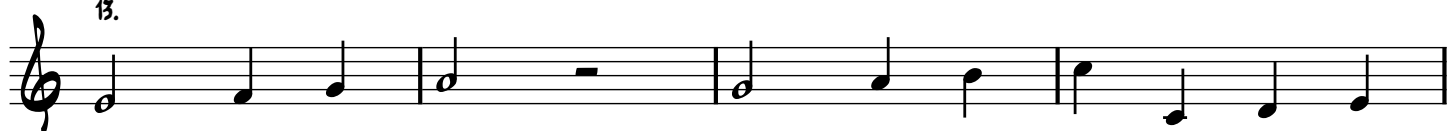
11.



12.



13.




14.

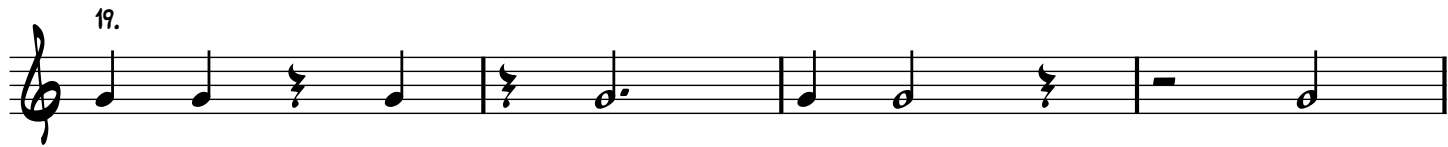
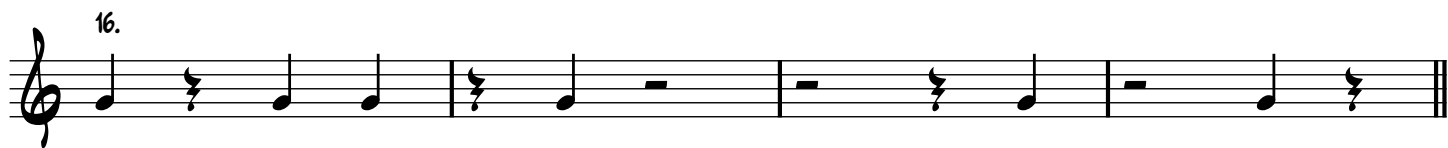


15.



 = 80

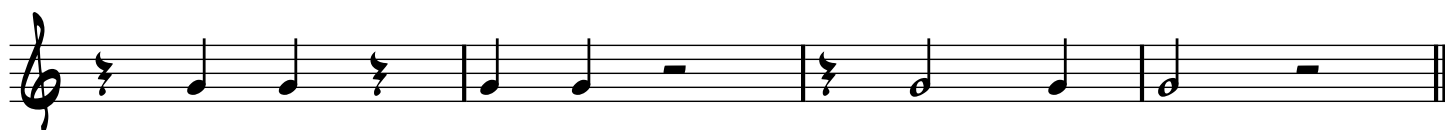




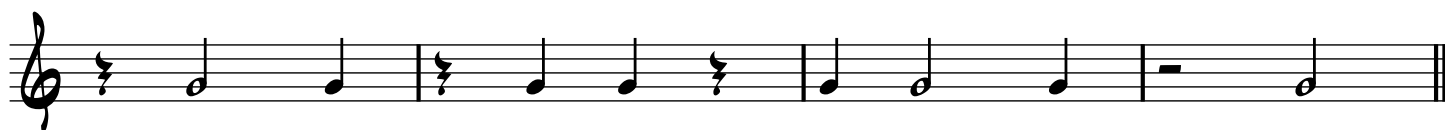
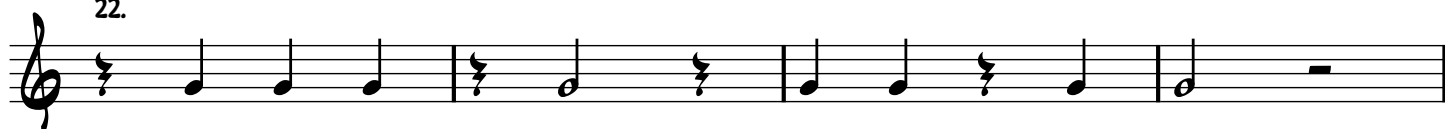
20.



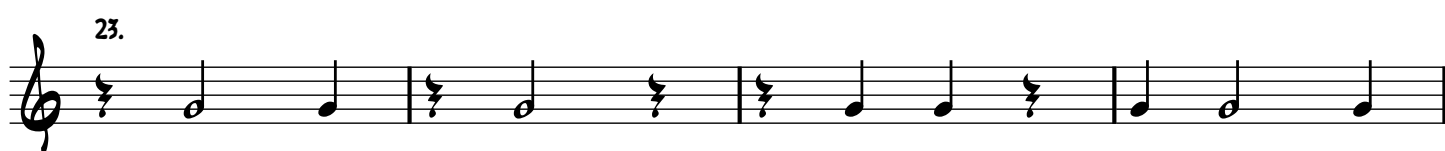
21.



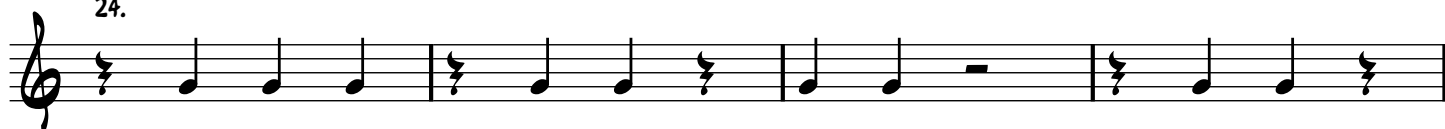
22.



23.



24.



Melodische oefeningen in do of C-groot

1.

do re mi fa sol la si do
C D E F G A B C

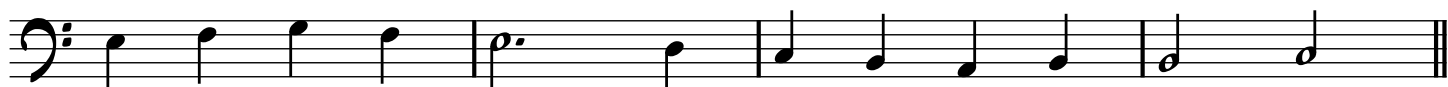
do si la sol fa mi re do
C B A G F E D C

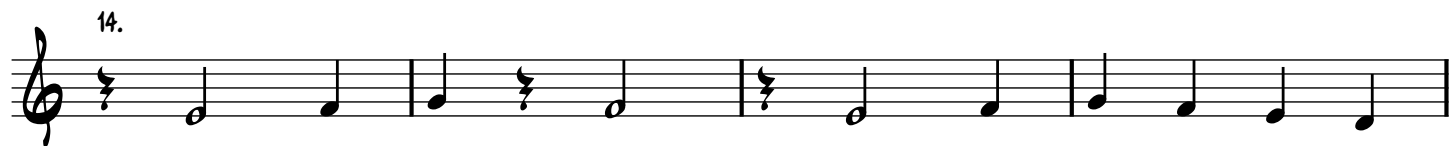
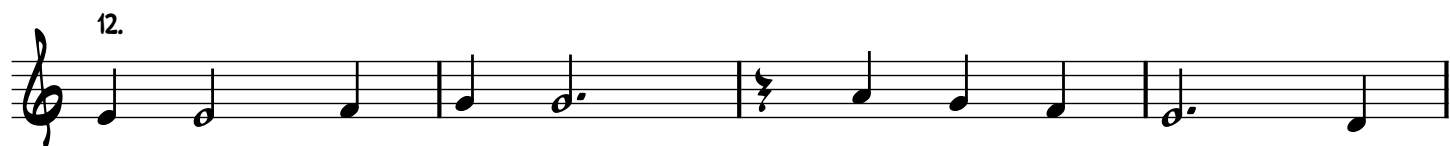
2.

3.

4.

5.





16.



17.



18.



Ritmische oefeningen

♩ = 80

1.



2.



3.



4.



5.



6.



7.



8

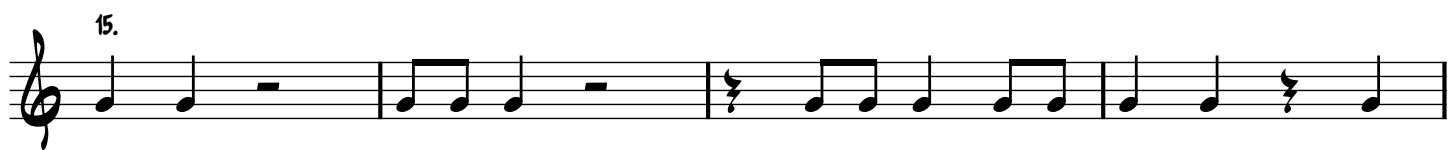
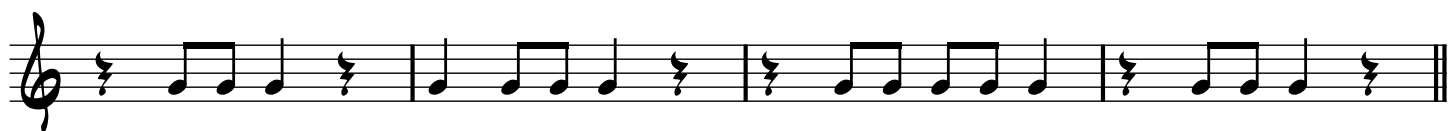


9.



10.





Melodische oefeningen in fa of F-groot

1.



fa sol la sib do re mi fa
F G A Bes C D E F



fa mi re do sib la sol fa
F E D C Bes A G F

Exercise 1 consists of two staves of music in F major. The first staff contains a sequence of eighth notes: fa (F), sol (G), la (A), sib (B-flat), do (C), re (D), mi (E), and fa (F). The second staff contains a sequence of eighth notes: fa (F), mi (E), re (D), do (C), sib (B-flat), la (A), sol (G), and fa (F). The notes are written on a treble clef staff with a key signature of one flat (B-flat).

2.



Exercise 2 consists of two staves of music in F major. The first staff contains a sequence of eighth notes: fa (F), sol (G), la (A), sib (B-flat), do (C), re (D), mi (E), and fa (F). The second staff contains a sequence of eighth notes: fa (F), mi (E), re (D), do (C), sib (B-flat), la (A), sol (G), and fa (F). The notes are written on a treble clef staff with a key signature of one flat (B-flat).

3.



Exercise 3 consists of two staves of music in F major. The first staff contains a sequence of eighth notes: fa (F), sol (G), la (A), sib (B-flat), do (C), re (D), mi (E), and fa (F). The second staff contains a sequence of eighth notes: fa (F), mi (E), re (D), do (C), sib (B-flat), la (A), sol (G), and fa (F). The notes are written on a treble clef staff with a key signature of one flat (B-flat).

4.

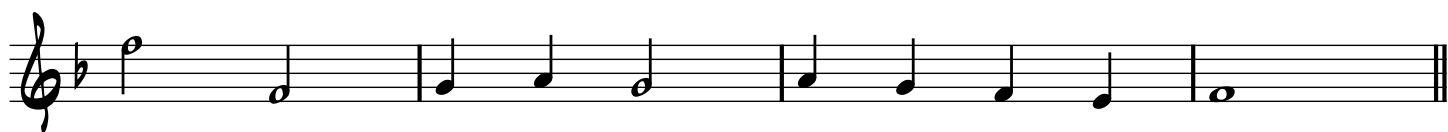


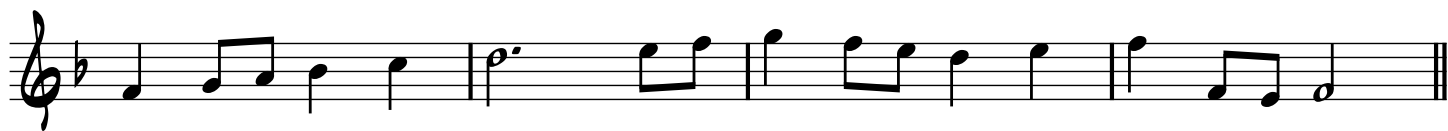
Exercise 4 consists of two staves of music in F major. The first staff contains a sequence of eighth notes: fa (F), sol (G), la (A), sib (B-flat), do (C), re (D), mi (E), and fa (F). The second staff contains a sequence of eighth notes: fa (F), mi (E), re (D), do (C), sib (B-flat), la (A), sol (G), and fa (F). The notes are written on a treble clef staff with a key signature of one flat (B-flat).

5.

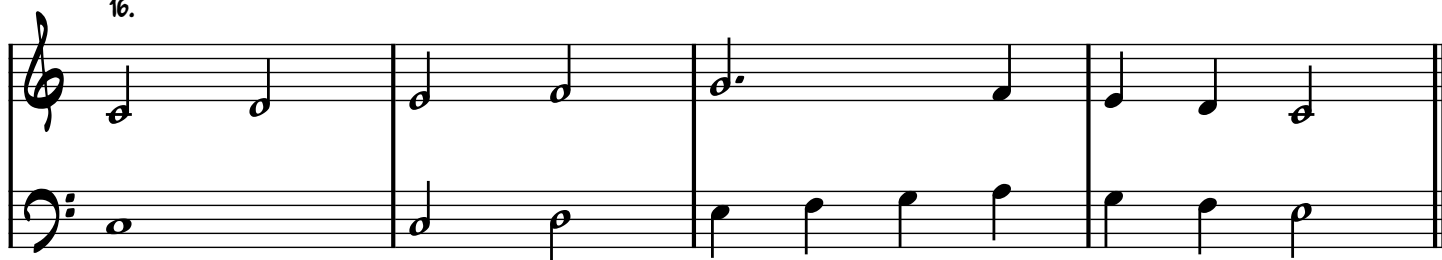


Exercise 5 consists of two staves of music in F major. The first staff contains a sequence of eighth notes: fa (F), sol (G), la (A), sib (B-flat), do (C), re (D), mi (E), and fa (F). The second staff contains a sequence of eighth notes: fa (F), mi (E), re (D), do (C), sib (B-flat), la (A), sol (G), and fa (F). The notes are written on a treble clef staff with a key signature of one flat (B-flat).





16.



17.



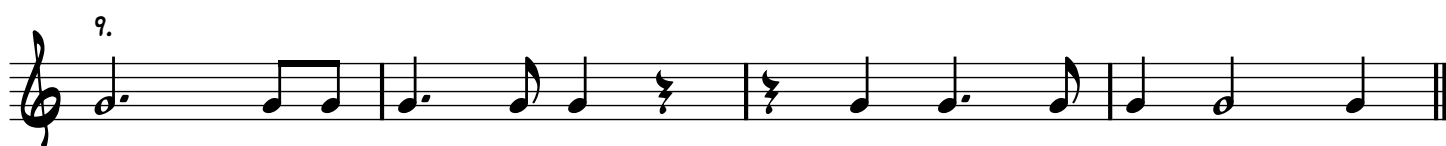
18.



19.



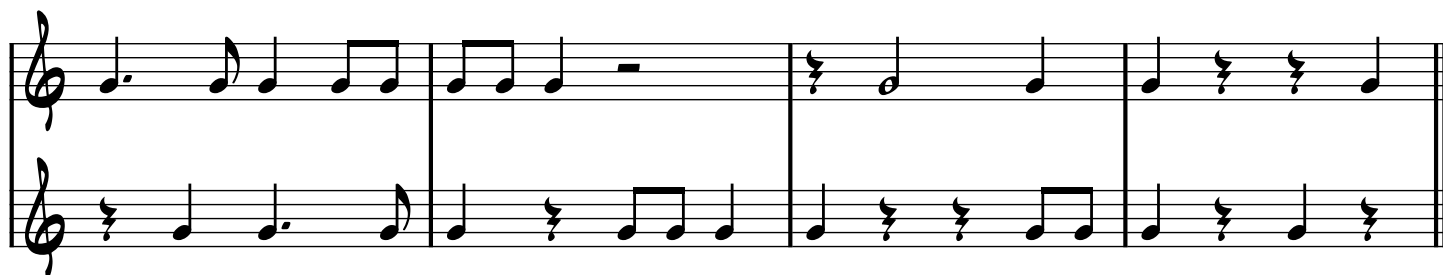
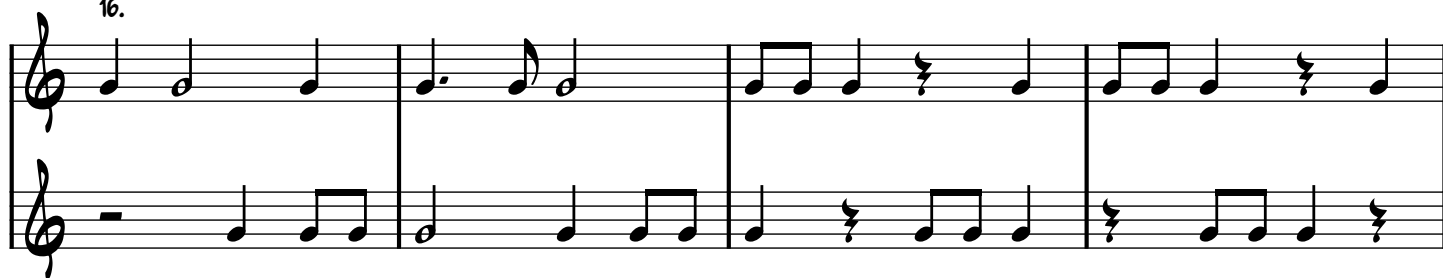
Ritmische oefeningen



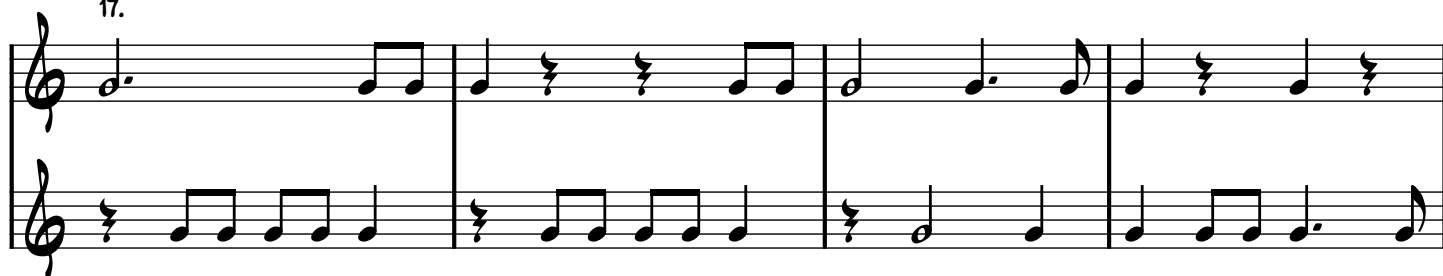


Ritmische duetten

16.

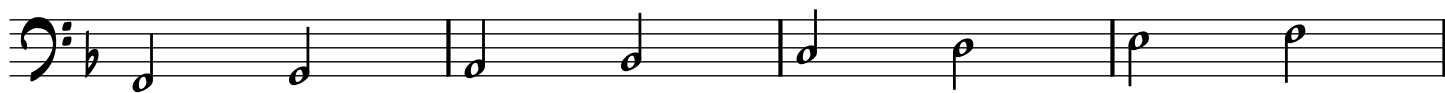


17.

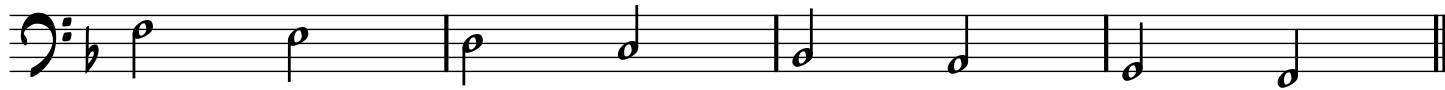


Melodische oefeningen in fa of F-groot

1.


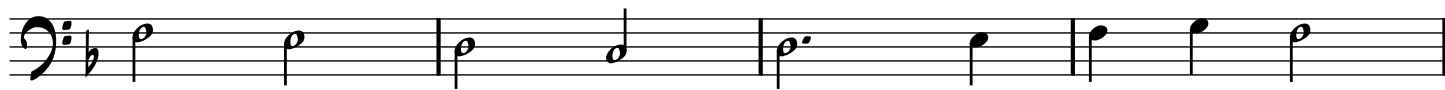


fa sol la sib do re mi fa
F G A Bes C D E F

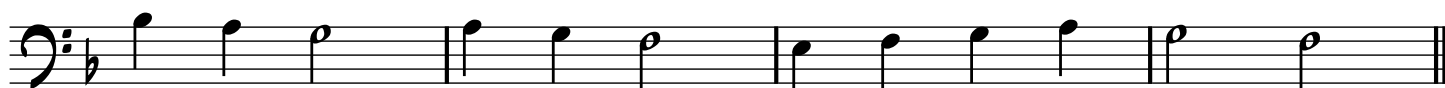
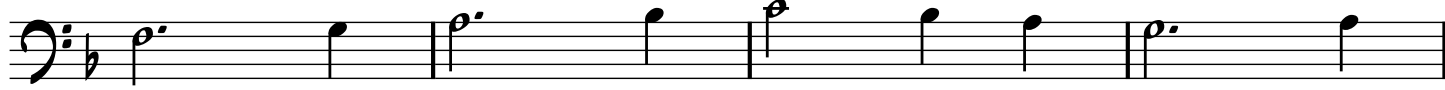


fa mi re do sib la sol fa
F E D C Bes A G F


2.



3.



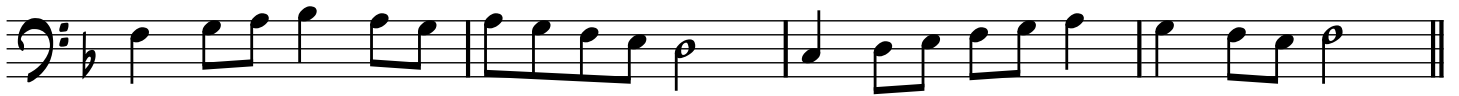
4.



5.



6.



7.



8.



9.



10.



11.



12.



13.



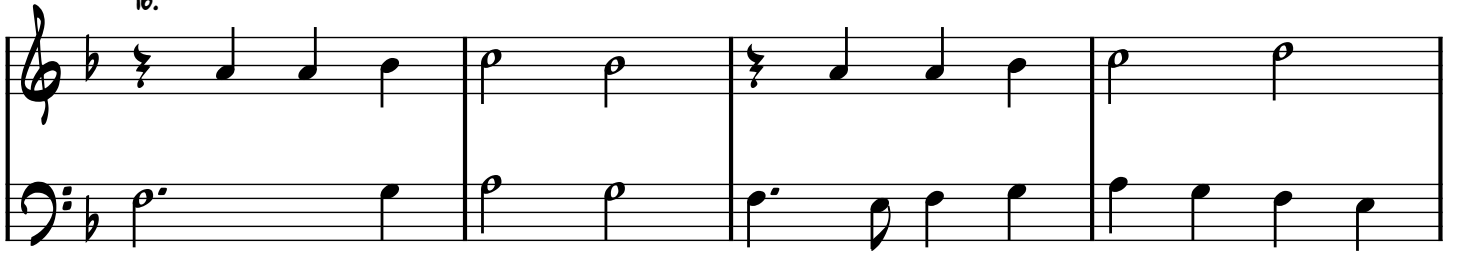
14.



15.



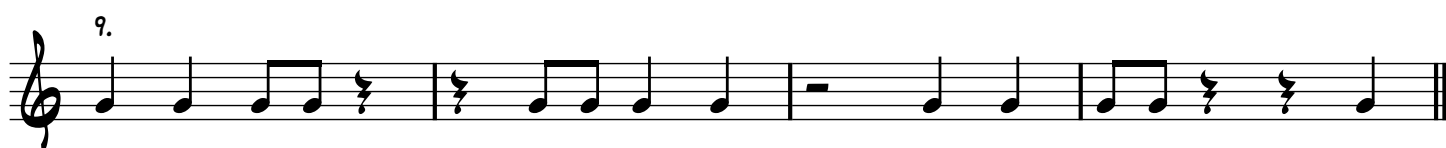
16.

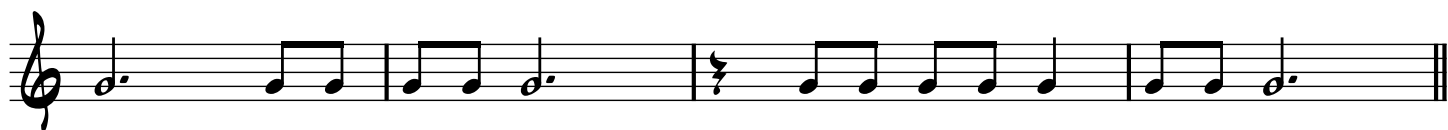


17.

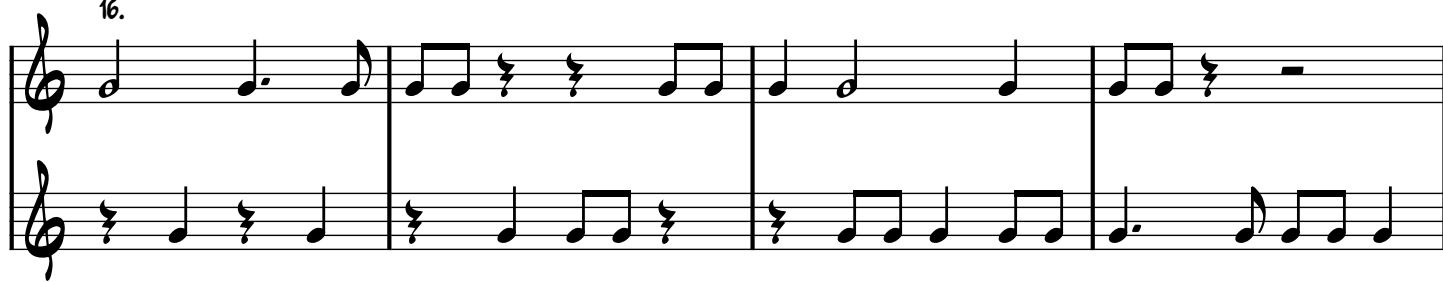


Ritmische oefeningen

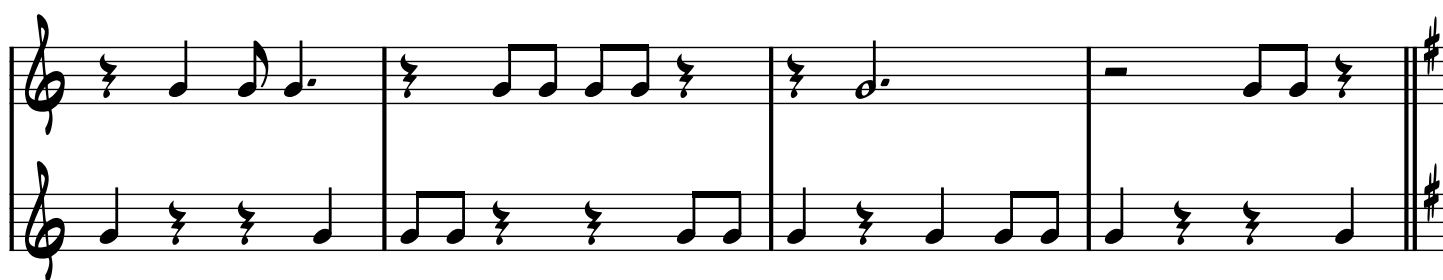
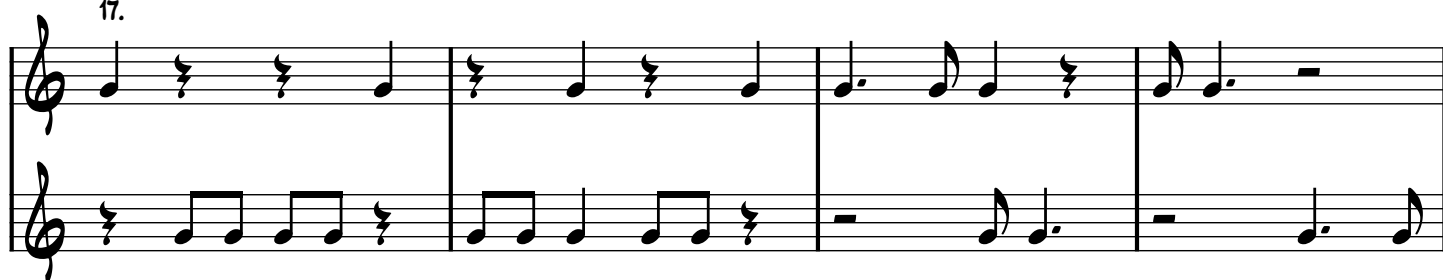




16.



17.



Melodische oefeningen in Sol of G-groot

1.

Sol la si do re mi fa# sol
G A B C D E Fis G

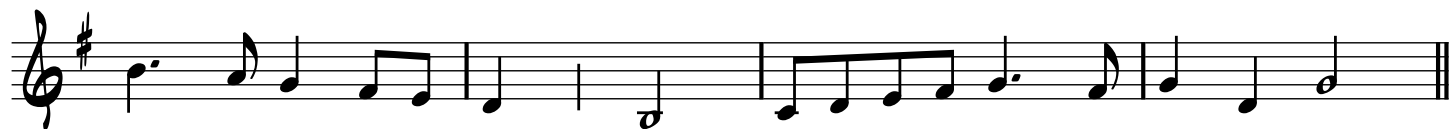
sol fa# mi re do si la sol
G Fis E D C B A G

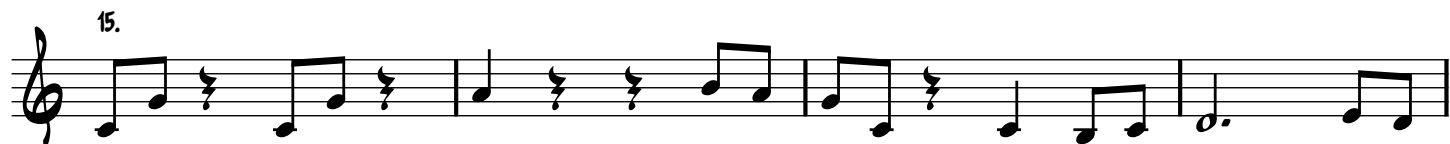
2.

3.

4.

5.





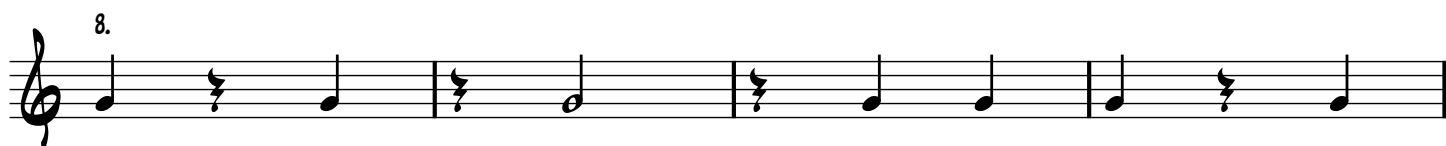
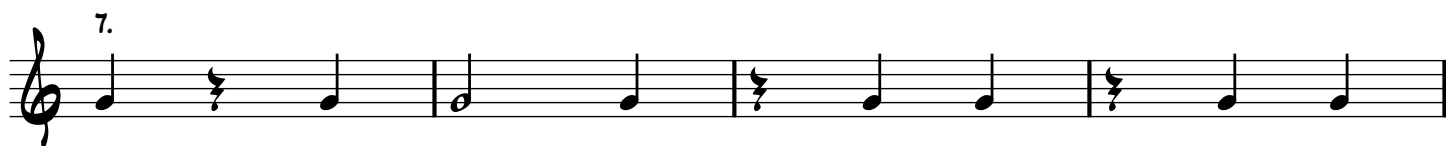
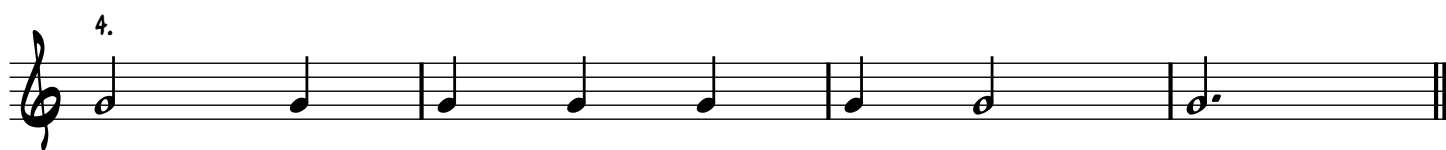
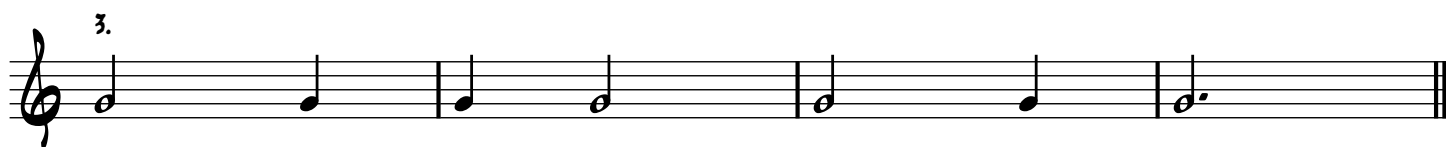
16.

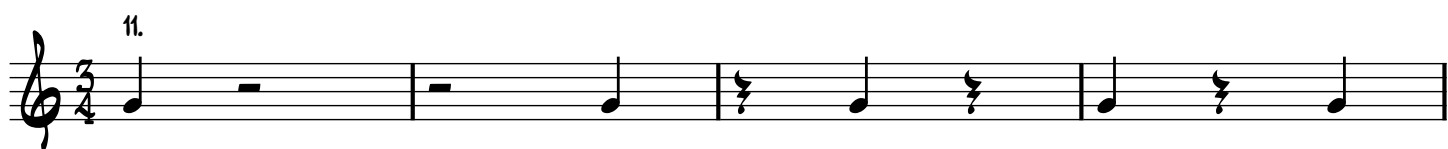


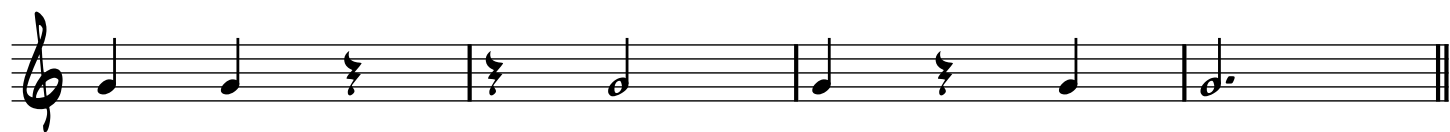
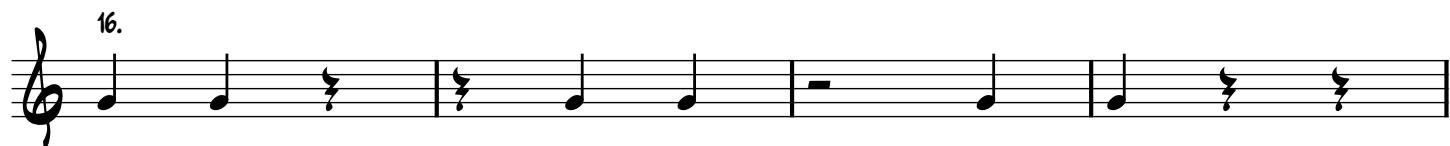
17.



Ritmische oefeningen







Melodische oefeningen in sol of G-groot

1.

Sol la si do re mi fa# sol
G A B C D E Fis G

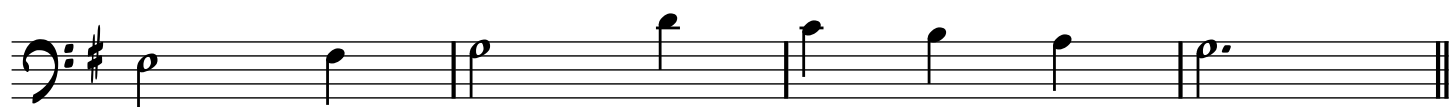
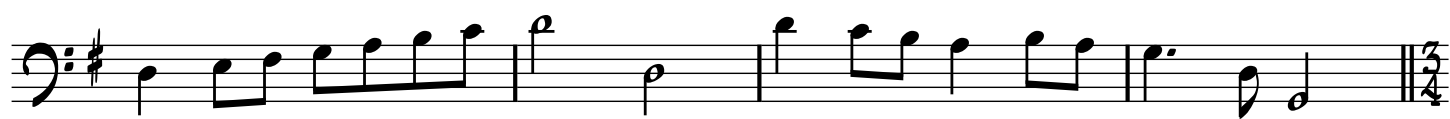
sol fa# mi re do si la sol
G Fis E D C B A G

2.

3.

4.

5.



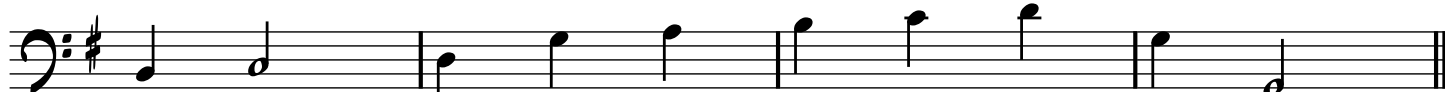
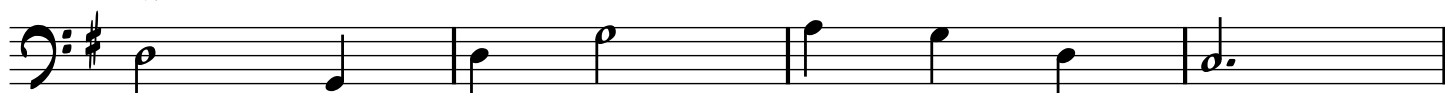
11.



12.



13.



14.



15.



Duetten



Ritmische oefeningen

2.

The second ending is written on a single staff with a treble clef. It consists of 12 measures. The notes are: G4 (quarter), A4-B4 (beamed eighth notes), A4 (quarter), G4 (half), F#4 (quarter), E4-F#4 (beamed eighth notes), E4 (quarter), D4 (half), C4 (quarter), B3 (half), A3 (quarter), and G3 (half). The piece ends with a double bar line.

5.

Musical notation for exercise 5, showing a sequence of eighth and quarter notes with rests on a single staff.

[illegible][illegible]

8.

Exercise 8 is a single staff in treble clef with a 3/4 time signature. The melody consists of eighth and quarter notes with rests.

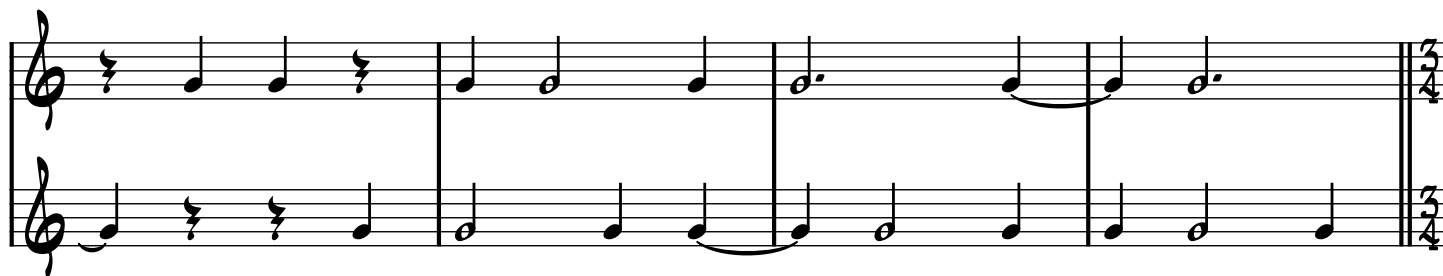
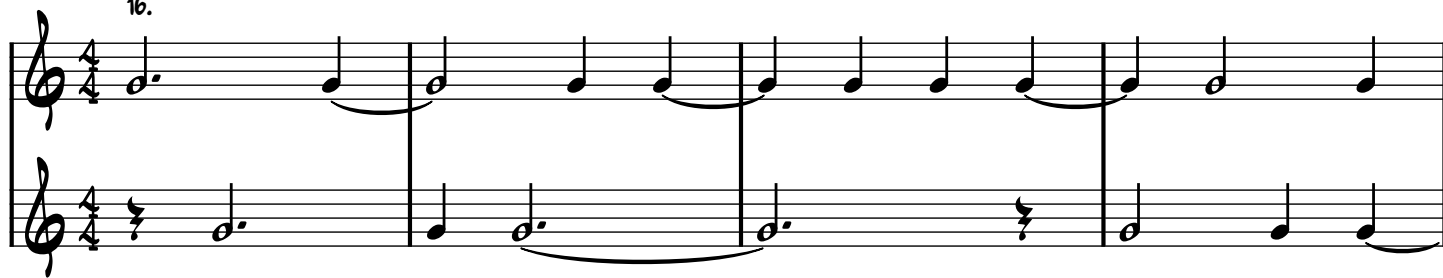
10.



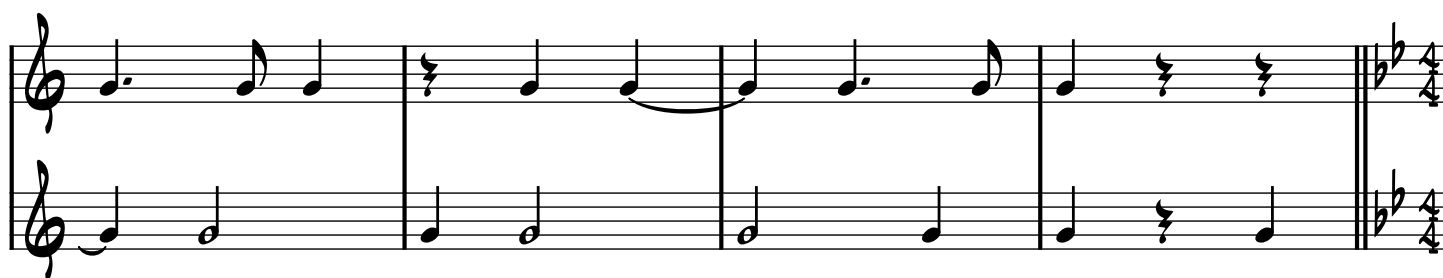


Duetten

16.



17.



Melodische studies in Bes of Sib-groot

1.

Sib do re mib fa sol la sib
Bes C D Es F G A Bes

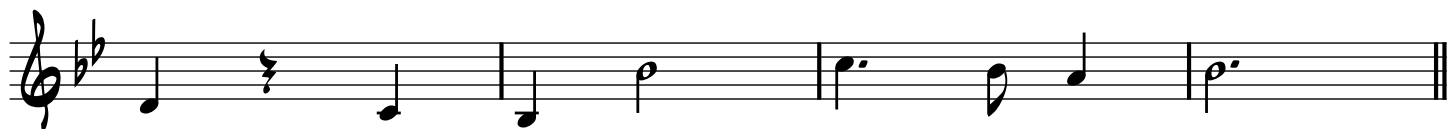
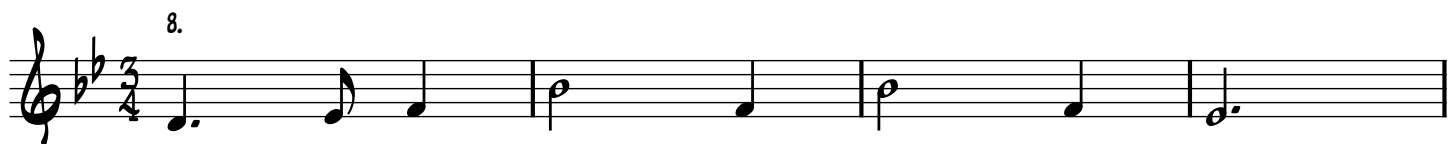
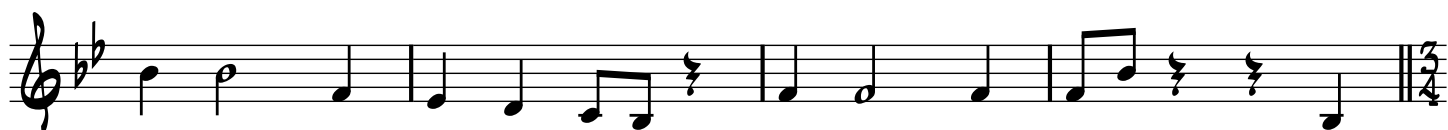
sib la sol fa mib re do sib
Bes A G F Es D C Bes

2.

3.

4.

5.



11.

[illegible][illegible]

14.

[illegible]

15.

Musical notation for exercise 15, featuring a treble clef, a key signature of one flat (B-flat), and a time signature of 3/4. The melody consists of eight notes: B-flat (quarter note), A (eighth note), G (eighth note), F (quarter note), E (half note), D (quarter note), C (quarter note), and B-flat (quarter note). There are ties between G and A, and between F and E. The piece concludes with a double bar line.

Duetten

16.

System 16, measures 1-4. Treble and bass staves in 3/4 time, key of B-flat major. The melody in the treble staff consists of quarter notes G4, A4, Bb4, C5, followed by a half note G4. The bass staff provides a harmonic accompaniment with quarter notes Bb3, C4, D4, E4, followed by a half note D4. Measures 1-2 are connected by a slur, and measures 3-4 are also connected by a slur.

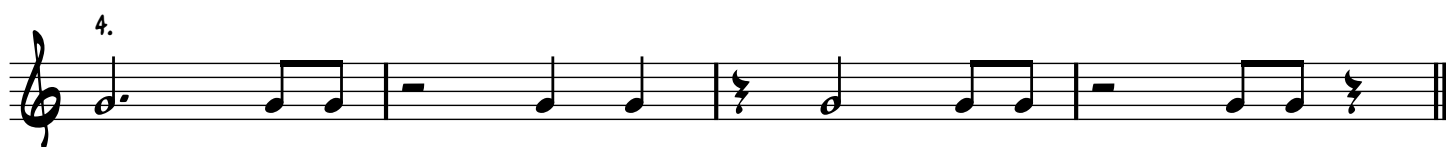
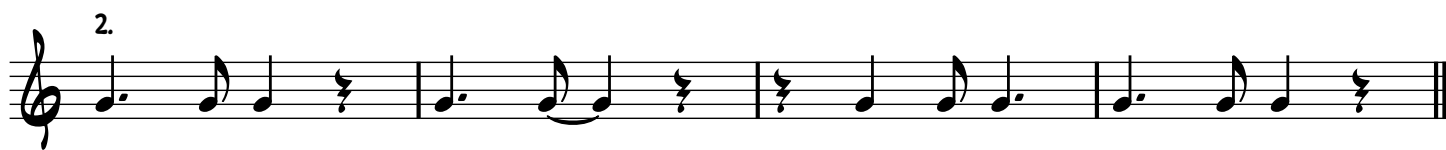
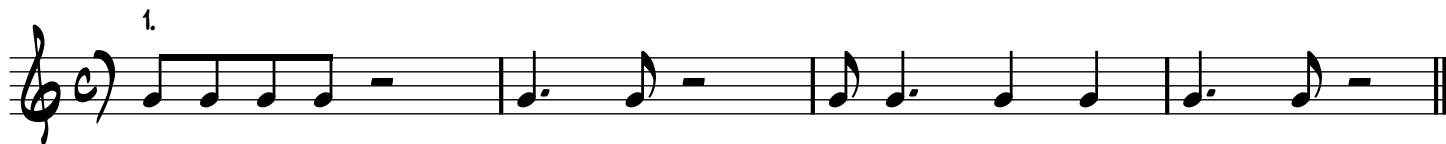
System 16, measures 5-8. Treble and bass staves in 3/4 time, key of B-flat major. The melody in the treble staff continues with quarter notes F4, E4, D4, C4, followed by a half note Bb3. The bass staff continues with quarter notes C4, Bb3, A3, G3, followed by a half note F3. Measures 5-6 and 7-8 are each connected by a slur. The system ends with a double bar line and a 3/4 time signature.

17.

System 17, measures 1-4. Treble and bass staves in 3/4 time, key of B-flat major. The melody in the treble staff starts with a quarter note G4, followed by a half note A4. The bass staff starts with a whole rest, followed by a half note Bb3. Measures 1-2 and 3-4 are each connected by a slur.

System 17, measures 5-8. Treble and bass staves in 3/4 time, key of B-flat major. The melody in the treble staff continues with quarter notes C5, Bb4, A4, G4, followed by a half note F4. The bass staff continues with quarter notes E4, D4, C4, Bb3, followed by a half note A3. Measures 5-6 and 7-8 are each connected by a slur. The system ends with a double bar line and a 3/4 time signature.

Ritmische oefeningen



10.

Musical notation for exercise 10, consisting of a single staff in treble clef with a key signature of one flat (Bb). The exercise consists of four measures. Measure 1: Quarter note Bb, quarter rest. Measure 2: Quarter note Bb, quarter rest. Measure 3: Quarter rest, quarter note Bb. Measure 4: Quarter rest, quarter note Bb. The piece ends with a double bar line.

11.

Musical notation for exercise 11, featuring a treble clef and a single staff with a sequence of eighth and quarter notes.

12.

Musical notation for exercise 12, featuring eighth and quarter notes with rests.

13.

The exercise is written on a single staff with a treble clef. It consists of four measures. The first measure contains four eighth notes (G4, A4, B4, C5). The second measure contains four eighth notes (D5, E5, F5, G5), with the first note (D5) tied to the previous measure. The third measure contains four eighth notes (A5, B5, C6, D6). The fourth measure contains four eighth notes (E6, F6, G6, A6), with the first note (E6) tied to the previous measure.

The first staff of music is written on a single five-line staff with a treble clef. It contains a sequence of notes: a quarter note G4, an eighth note A4, an eighth note B4, a quarter note C5, a quarter note B4, an eighth note A4, and an eighth note G4. This sequence is repeated three times, with a double bar line after each repetition. The final measure of the staff contains a double bar line.

14.

The musical notation for exercise 14 is written on a single staff with a treble clef. It consists of two measures. The first measure contains a sequence of eighth notes: G4, A4, B4, C5, B4, A4, G4, followed by a quarter rest. The second measure contains a sequence of eighth notes: G4, A4, B4, C5, B4, A4, G4, followed by a quarter rest. The notes are beamed in pairs of four.

The first staff of music is written on a five-line staff with a treble clef. It contains two measures. The first measure has a half note on G4, a half note on A4, a half note on B4, a half note on C5, a half note on B4, a half note on A4, and a half note on G4. The second measure has a half note on F#4, a half note on E4, a half note on D4, a half note on C4, a half note on B3, a half note on A3, and a half note on G3. The staff ends with a double bar line.

15.

Musical notation for exercise 15, a single staff in treble clef with a key signature of one flat (B-flat). The exercise consists of four measures. Measure 1: Quarter notes G4, A4, Bb4, C5, followed by a half note D5. Measure 2: Quarter notes D5, C5, Bb4, A4, followed by a half note G4. Measure 3: Quarter notes G4, A4, Bb4, C5, followed by a half note D5. Measure 4: Quarter notes D5, C5, Bb4, A4, followed by a half note G4. The piece ends with a double bar line.

Rhythm Song - (AABA)



Melodische oefeningen in Sib of Bes groot

1.

Sib do re mib fa sol la sib
Bes C D Es F G A Bes

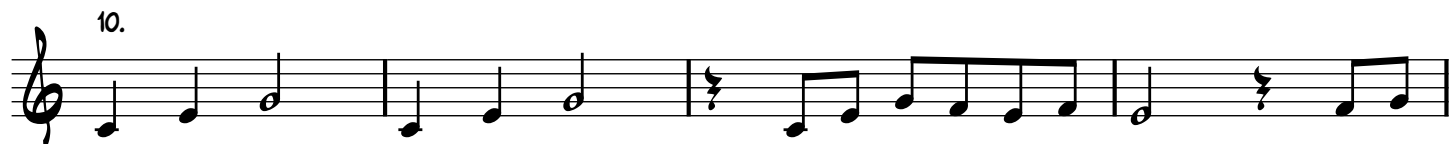
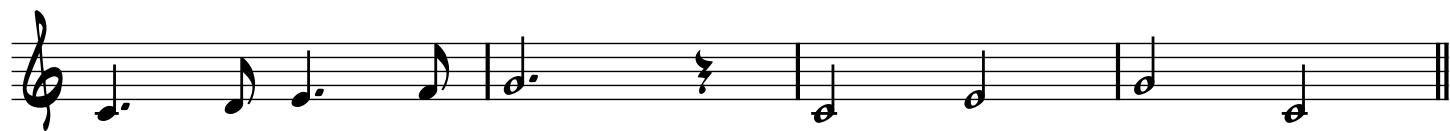
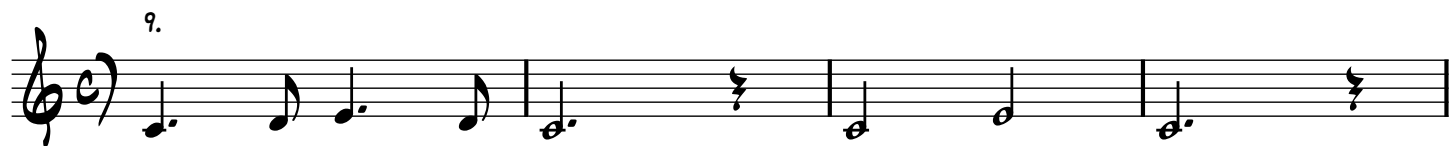
sib la sol fa mib re do sib
Bes A G F Es D C Bes

2.

3.

4.

5.



Duetten

16.

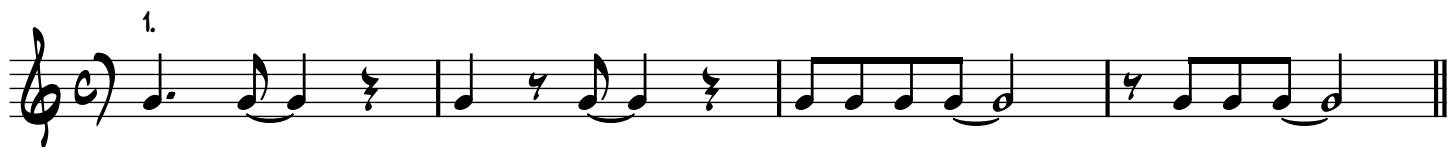
Exercise 16 consists of four measures in common time (C) and B-flat major. The treble staff begins with a half note G4, followed by quarter notes A4 and Bb4, then a half note C5, and ends with a half note Bb4. The bass staff begins with a half note G3, followed by quarter notes F3 and E3, then a half note D3, and ends with a half note C3. The final measure of the bass staff contains a whole note C3.

Exercise 16 continues with measures 5-8. The treble staff has a half note G4, followed by quarter notes A4 and Bb4, then a half note C5, and ends with a half note Bb4. The bass staff has a half note G3, followed by quarter notes F3 and E3, then a half note D3, and ends with a half note C3. The final measure of the bass staff contains a whole note C3.

17.

Exercise 17 consists of four measures in 3/4 time and B-flat major. The treble staff begins with a half note G4, followed by quarter notes A4 and Bb4, then a half note C5, and ends with a half note Bb4. The bass staff begins with a half note G3, followed by quarter notes F3 and E3, then a half note D3, and ends with a half note C3. The final measure of the bass staff contains a whole note C3.

Exercise 17 continues with measures 5-8. The treble staff has a half note G4, followed by quarter notes A4 and Bb4, then a half note C5, and ends with a half note Bb4. The bass staff has a half note G3, followed by quarter notes F3 and E3, then a half note D3, and ends with a half note C3. The final measure of the bass staff contains a whole note C3.



[illegible]

The first staff of music is in treble clef and 2/4 time. It begins with a quarter rest, followed by a quarter note G4, an eighth note A4, an eighth note B4, a quarter note C5, and a quarter note D5. This is followed by a half rest, then an eighth note E5, an eighth note F5, a quarter note G5, a quarter note F5, a quarter note E5, a quarter note D5, an eighth note C5, an eighth note B4, a quarter note A4, and a quarter note G4. The staff ends with a double bar line.

[illegible]

14.

The musical notation for exercise 14 is written on a single staff in treble clef with a 3/4 time signature. The melody consists of the following notes: a quarter note G4, an eighth note A4 followed by a quarter note B4, a quarter note C5, a quarter note B4, an eighth note A4 followed by a quarter note G4, a quarter note F4, a quarter note E4, a quarter note D4, a quarter note C4, a quarter note B3, and a quarter note A3. The piece ends with a double bar line.

15.

Musical notation for exercise 15, featuring a single staff with a treble clef and a key signature of one flat (Bb). The melody consists of: G4 (quarter), F4 (quarter), E4 (half), D4 (half), C4 (half), B3 (half), A3 (half), G3 (half). The notes are connected by a slur from D4 to G3.

8

1. 2.

D.S. al Coda

⌂

Melodische studies - Re of D-groot

1.

Re mi fa# sol la si do# re
D E Fis G A B Cis D

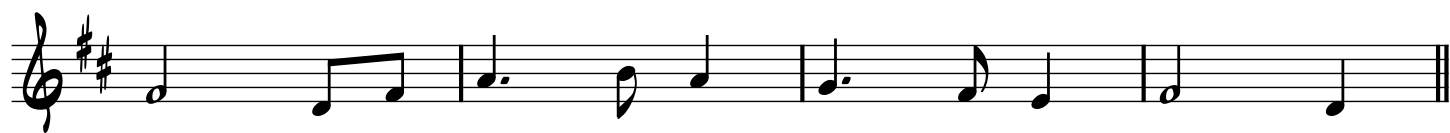
re do# si la sol fa# mi re
D Cis B A G Fis E D

2.

3.

4.

5.





Duetten



Ritmische oefeningen

[illegible]

2.

The second ending is written on a single staff. It begins with a treble clef and a key signature of one flat (B-flat). The notation consists of the following notes and rests: a half note B-flat, a quarter rest, an eighth note D, a quarter note E, an eighth note F, a quarter note G, an eighth note A, a quarter note B-flat, and a half note C. The final measure contains a whole note C, followed by a double bar line.

3.

Musical notation for Exercise 3, first staff. The staff contains four measures: Measure 1: Quarter note G4, eighth note A4, eighth rest, eighth note B4. Measure 2: Eighth rest, eighth note C5, quarter note B4. Measure 3: Quarter note A4, eighth note G4, eighth rest, eighth note F4. Measure 4: Half rest, eighth note E4, quarter note D4. The staff ends with a double bar line.

5.

Exercise 5 is a single staff in treble clef with a key signature of one flat (Bb). The exercise consists of four measures. Measure 1: quarter rest, quarter note Bb, quarter rest, quarter note Bb. Measure 2: quarter note Bb, quarter rest, quarter note Bb, quarter rest. Measure 3: quarter rest, quarter note Bb, quarter note Bb, quarter rest. Measure 4: quarter rest, quarter note Bb, quarter note Bb, quarter rest. The exercise ends with a double bar line.

6.

Exercise 6 is a single staff in treble clef with a key signature of one flat (Bb). The melody consists of eighth and quarter notes with rests, ending with a double bar line.


7.

Exercise 7 is a single staff of music in treble clef. It begins with a treble clef and a key signature of one sharp (F#). The exercise consists of three measures. The first measure contains an eighth note G4, an eighth rest, an eighth note A4, an eighth rest, and an eighth note B4. The second measure contains an eighth note C5, an eighth rest, an eighth note D5, an eighth rest, and an eighth note E5. The third measure contains an eighth note F#5, an eighth rest, an eighth note G5, an eighth rest, and an eighth note A5. The exercise ends with a double bar line.

8.

8.

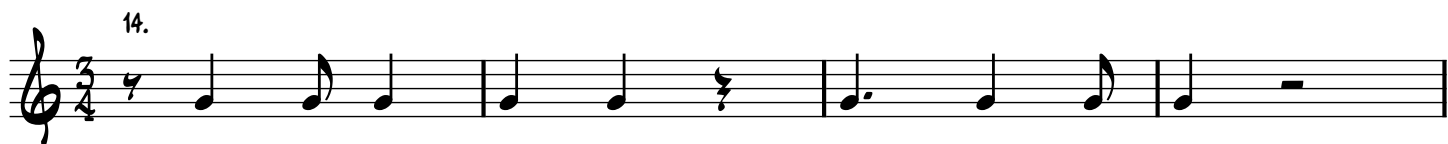
9.



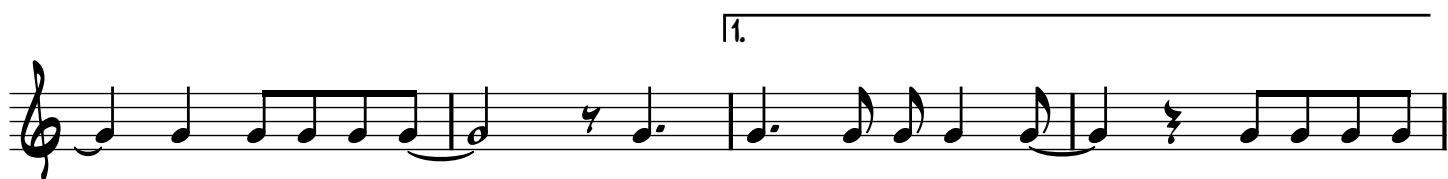
Exercise 9 consists of four measures in 3/4 time. Measure 1: Quarter note G4, quarter note A4, eighth rest, quarter note B4. Measure 2: Quarter rest, quarter note A4, quarter rest. Measure 3: Quarter rest, quarter note G4, quarter rest. Measure 4: Quarter note G4, whole rest.

10.

Musical notation for exercise 10, featuring a single staff in treble clef with a key signature of one flat (Bb). The melody consists of four measures, each containing a quarter note Bb, an eighth rest, an eighth note C, and a quarter note D. The piece concludes with a double bar line.



Rhythm Song (AABA)



Melodische Studies in D-groot of re-groot

1.

D E Fis G A B Cis D
Re mi fa# sol la si do# re

D Cis B A G Fis E D
re do# si la sol fa# mi re

2.

D E F G A B C D
re mi fa sol la si do re

D E F G A B C D
re mi fa sol la si do re

3.

D E F G A B C D
re mi fa sol la si do re

D E F G A B C D
re mi fa sol la si do re

4.

D E F G A B C D
re mi fa sol la si do re

D E F G A B C D
re mi fa sol la si do re

5.

D E F G A B C D
re mi fa sol la si do re

D E F G A B C D
re mi fa sol la si do re

6.



7.

